

CERTIFICATE OF LOCATION OF GOVERNMENT CORNER

NORTH QUARTER Corner of Section 20, Township 106N, Range 41W

5th Principal Meridian, State of Minnesota, County of Murray.

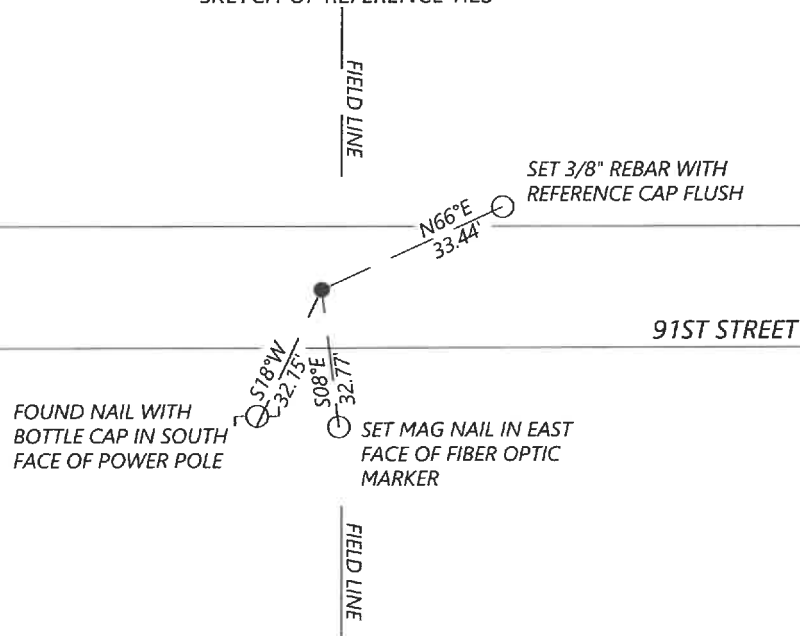
At the corner location shown on the sketch:

☒ On 10/16/2021 found a 3/8" IRON PIN FLUSH WITH THE ROAD SURFACE.
DATE

☒ left monument as found ☐ lowered monument ☐ removed monument (explain)

☐ On _____ placed a _____
DATE

SKETCH OF REFERENCE TIES



N.T.S.

Statement of evidence for this corner location is on back of this page.

I hereby certify that this document was researched and prepared by me or under my direct supervision and that I am a licensed Land Surveyor under the laws of the State of Minnesota.

Signature [Signature]

Date 4-17-2022 License No. 57085

Title:

☒ Land Surveyor ☐ Professional Engineer
☐ County Surveyor ☐ County Engineer

OFFICE OF THE COUNTY RECORDER

County of Murray

I hereby certify that this document was filed in the Co.

Recorder's office at _____ M. on the 22nd day of April A.D. 20 22

County Recorder [Signature]

by _____, Deputy

DOCUMENT NO. _____

SETH WECKMAN
Minnesota License No. 57085

Statement of Evidence:

North Quarter corner of Section 20, Township 106 North, Range 41 West, 5th Principal Meridian, Murray County, Minnesota.

1861 L.G.M. Fletcher, U.S. Deputy Surveyor, during the original public land survey a post was set and built mound with trenches, pits, and charred stake.

Undated insert from Murray County, found Government mound, 4 stones, 1 on top of 3 stones. Set a 3/8" x 24" long iron pin and established 3 ties.

2012 Unknown insert from Murray County, found a 3/8" pin, down 2". The monument was found 2ft North of the centerline.

2021 Westwood Professional Services searched the area and found a 3/8" iron pin, flush with the road surface. The found monument is +/- 0.5ft North of the East/West road centerline and +/- 1.5ft West of the occupation lines North/South. Found one reference tie which matches the distance from the undated entry. The found monument fits a computed lost position within a few feet. Accepting the found monument as the corner position and established 2 additional reference ties.

Analysis of the recovered data, field evidence and survey measurements, indicates that the monument found is the correct perpetuation of this corner. For additional information concerning this corner please contact Westwood Professional Services.